

S

CONDENSATION

Condensation is a natural process that occurs when warm, moist air comes in contact with a cold surface. In a double-pane window, the warm air from the room hits the inner pane, causing moisture to condense on its surface. This is most noticeable in winter months when the outside temperature is low. Condensation is not a defect and does not affect the performance or warranty of the window.

PROCEDURE

To prevent condensation, you can take several steps: 1. Increase indoor ventilation by opening windows or using fans. 2. Use dehumidifiers in high-moisture areas. 3. Adjust the thermostat to a lower temperature during winter. 4. Clean the window panes regularly to remove any existing condensation. 5. Ensure that the window is properly sealed to prevent outside air from entering. If condensation persists, it may be a sign of a more serious issue, such as a leak or a problem with the window's insulation, and you should contact a professional.

THE FINE PRINT

Please read the fine print of your warranty carefully. The warranty is valid only if you register it online within the specified time frame. The warranty covers manufacturing defects but does not cover damage caused by misuse, accidents, or environmental factors. The warranty is non-prorated and transferable. For more details, please refer to the full warranty document.

WARRANTY REGISTRATION & TRANSFER

Warranty registration is required for the warranty to be valid. You can register your warranty online at www.sunrisewarranty.com. The warranty is transferable to a new owner if you register it properly. Please provide accurate information during the registration process.

This is the only acceptable means of registering your warranty.

INSULATED GLASS - LIFETIME NON-PRORATED TRANSFERABLE WARRANTY

Our Insulated Glass units are covered by a lifetime, non-prorated, transferable warranty. This warranty covers any defects in the glass or the sealant. If a defect is found, we will repair or replace the unit at no cost to you. The warranty is valid only if you register it online. For more information, please contact our customer service team.

GLASS BREAKAGE - LIFETIME NON-PRORATED WARRANTY

Our glass is covered by a lifetime, non-prorated warranty against breakage. If the glass breaks due to a manufacturing defect, we will replace it at no cost. This warranty does not cover breakage caused by accidents or misuse. Please contact us immediately if you experience any issues.

MADERA™ PREMIUM TRIM - NON-PRORATED TRANSFERABLE WARRANTY

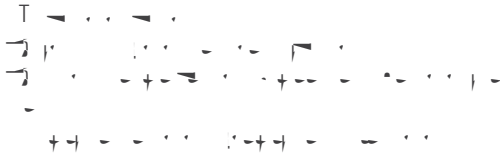
Our Madera™ Premium Trim is covered by a non-prorated, transferable warranty. This warranty covers any defects in the trim material. If a defect is found, we will repair or replace the trim at no cost. The warranty is valid only if you register it online.



V

C A & A

TILTING IN DOUBLE HUNG SASHES



REMOVING SLIDING WINDOW SASHES



OPERATING CASEMENT WINDOWS



CLEANING MATERIALS



REGISTER YOUR WARRANTY ONLINE AT
www.sunrisewarranty.com



LIFETIME NON-PRORATED TRANSFERABLE

▲ & S
▲ A A

